



GEROtherm[®] installation system

The versatile and flexible devices and adapters for the sinking of GEROtherm[®] geothermal probes

GEROtherm® PUSH-FIX push device

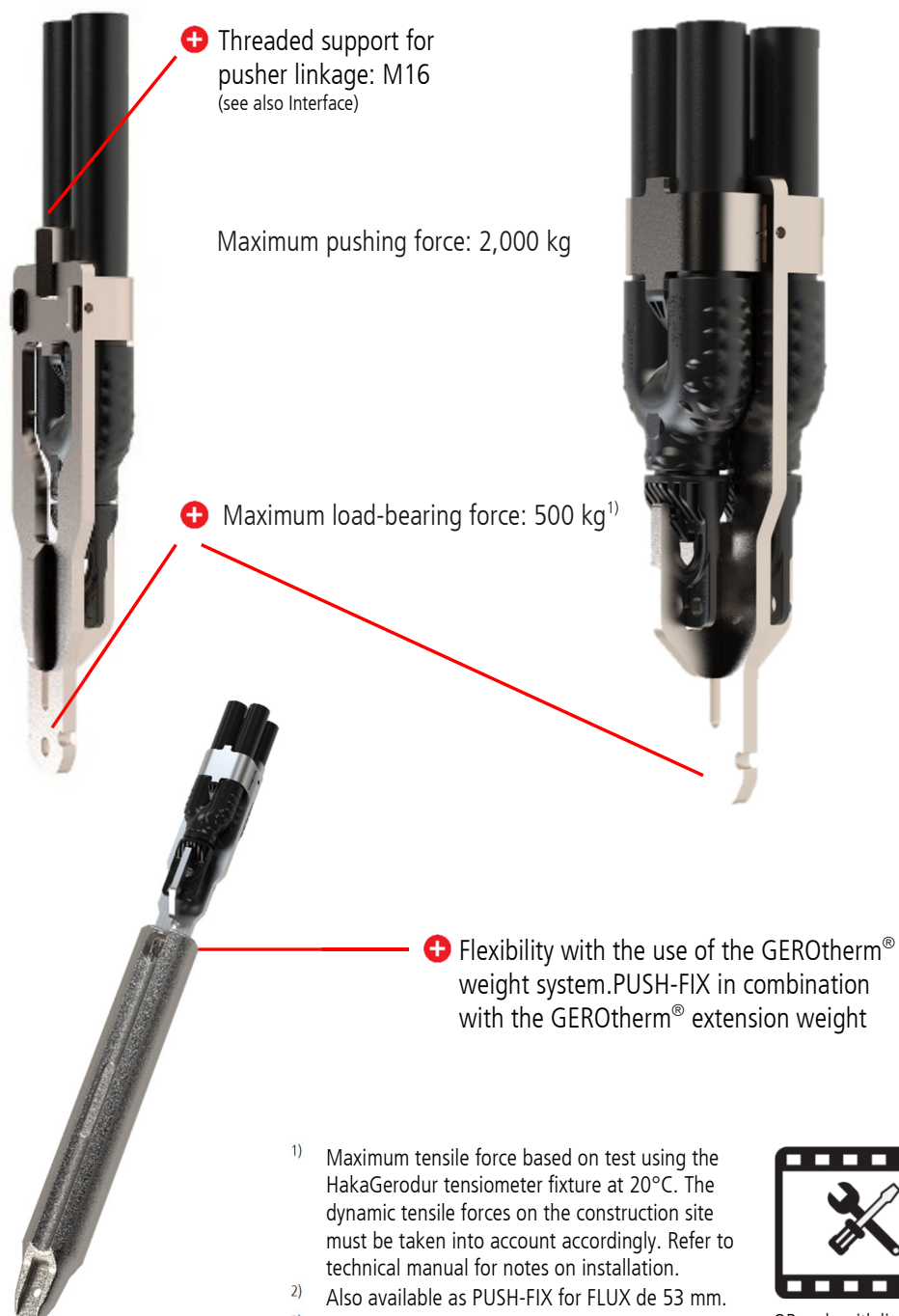
PUSH-FIX as a push device and weight connector for the sinking of single and double-U GEROtherm® geothermal probes with linkage support.

The proven GEROtherm® PUSH-FIX push device are available for all geothermal probes of the types DUPLEX³⁾, VARIO, FLUX²⁾ with a diameter of 32mm to 53 mm and in the versions -REX und -RT. The PUSH-FIX push device has performed particularly well in flush boring applications.

The GEROtherm® weight components can be combined in a simple manner. This guarantees flexibility when sinking GEROtherm® geothermal probes in boreholes on the construction site.

For single-U, GEROtherm® geothermal probes

For double-U, GEROtherm® geothermal probes



¹⁾ Maximum tensile force based on test using the HakaGerodur tensiometer fixture at 20°C. The dynamic tensile forces on the construction site must be taken into account accordingly. Refer to technical manual for notes on installation.

²⁾ Also available as PUSH-FIX for FLUX de 53 mm.

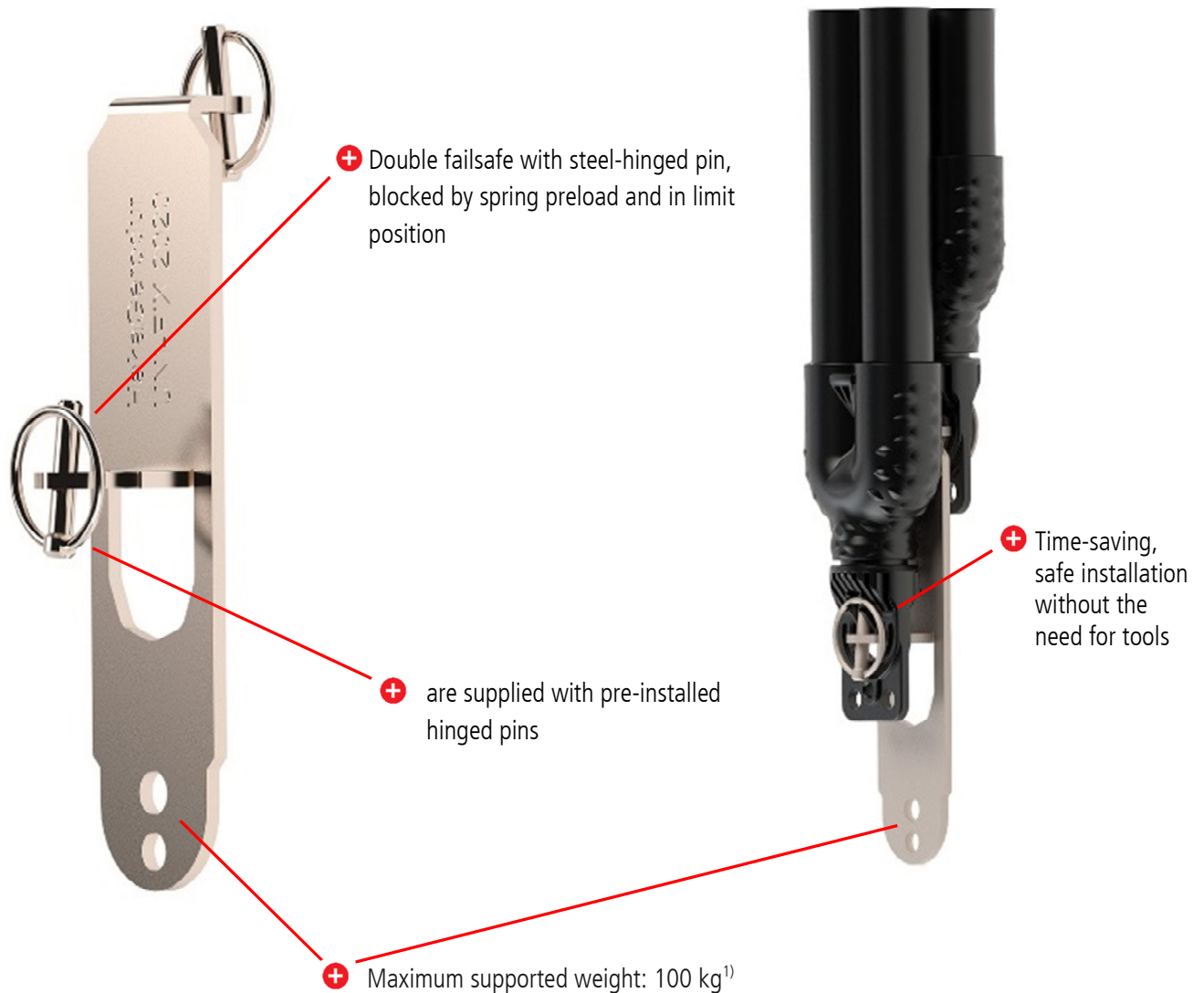
³⁾ Not available for DUPLEX de 50mm



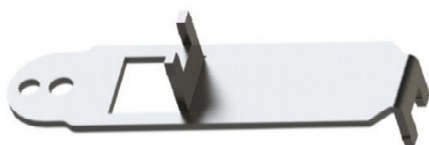
QR-code with link to our assembly video

GEROtherm® UNI-FIX 2020 weight connector

UNI-FIX 2020 weight connectors are available for all geothermal probes of the types **DUPLEX**³⁾, **VARIO**, **FLUX** with a diameter of 32mm to 53 mm and in the versions **-REX** und **-RT**. and serves for universal weight attachment. With additional mechanical securing similar to the GEROtherm® weight system, the probe feet are hold together offset at the optimum distance. The hinge pins are pre-installed and are supplied together with the UNI-FIX 2020. The weight connector ensures offset probe base installation and reduces the required installation diameter of the double-U geothermal probes.



The UNI-FIX weight connector is also available without additional mechanical securing by the hinged pins.



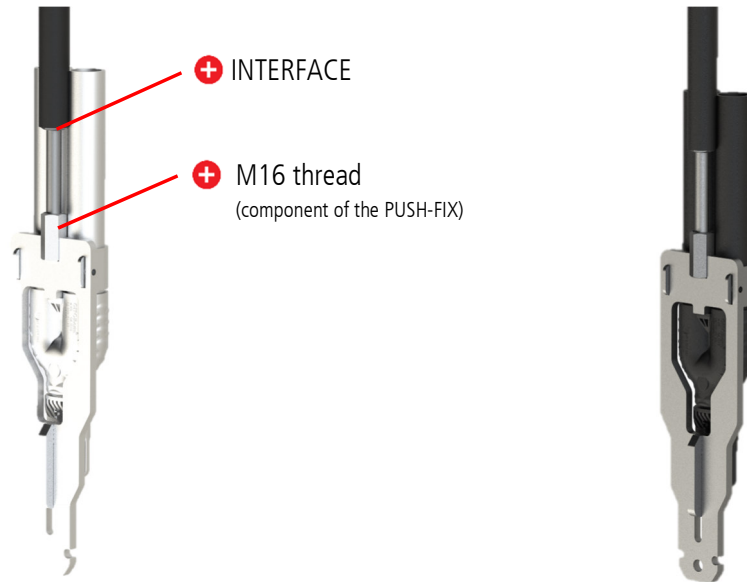
¹⁾ Maximum tensile force based on test using the HakaGerodur tensiometer fixture at 20°C. The dynamic tensile forces on the construction site must be taken into account accordingly. Refer to technical manual for notes on installation.

³⁾ For DUPLEX de 50mm, see separate connector system

INTERFACE suitable for the GEROtherm® PUSH-FIX push device

The GEROtherm® PUSH-FIX push device with M16 thread ensures the safe use of an installation rod and is very proven in case of high buoyancy due to water. Matching transition to the push linkage with the coordinated **INTERFACE**.

INTERFACE guide piece for holding push linkages



INTERFACE screwed into the PUSH-FIX

Scope of delivery/dimensions: INTERFACE

